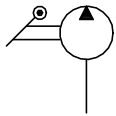
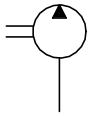


## Pumpen

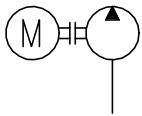
Handpumpe



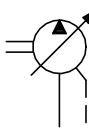
Konstantpumpe



Konstantpumpe mit Elektromotor

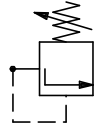


Verstellpumpe

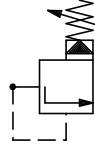


## Druckventile

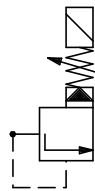
Druckbegrenzungsventil  
direktgesteuert



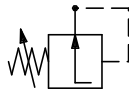
Druckbegrenzungsventil  
vorgesteuert



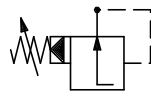
Druckbegrenzungsventil  
el. entlastbar



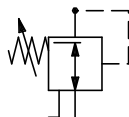
Druckminderventil  
direktgesteuert



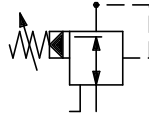
Druckminderventil  
vorgesteuert



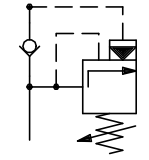
3-wege-Druckminderventil  
direktgesteuert



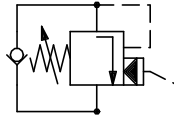
3-wege-Druckminderventil  
vorgesteuert



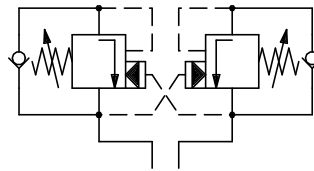
Speicher-Abschaltventil  
Hoch- Niederdruck-Abschaltventil



Senkbremsventil  
einfach



Senkbremsventil  
doppelt



## Stromventile

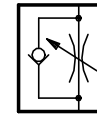
Blende



Drosselventil



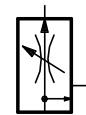
Drossel-Rückschlagventil



2-wege-Stromregelventil



3-wege-Stromregelventil



Stromteiler



## Sperrventile

Rückschlagventil



entsperrbares Rückschlagventil



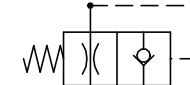
Zwillings-Rückschlagventil, entsperrbar



Wechselventil



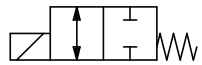
Rohrbruchsicherung



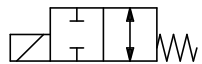
HYDRAULIK - SCHEMA		
Kunde:		
Anlage:		
Kom.Nr.:		
ABB Technikerschule	Dat.:	Gez.:
CH-5400 Baden	S	Symbole

## Wegeventile

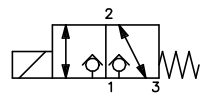
2/2-wege-Magnetventil  
stromlos zu



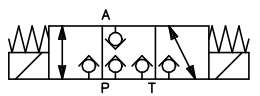
2/2-wege-Magnetventil  
stromlos offen



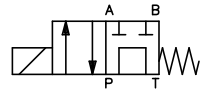
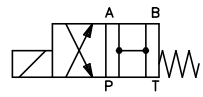
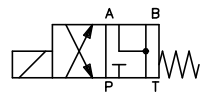
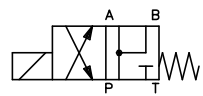
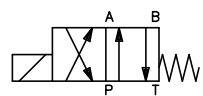
3/2-wege-Sitzventil



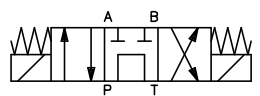
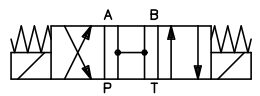
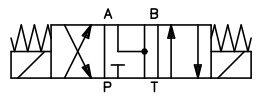
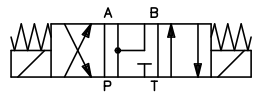
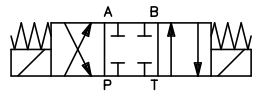
3/3-wege-Sitzventil



4/2-wege-Magnetventile

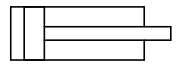


4/3-wege-Magnetventile

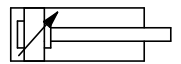


## Verbraucher

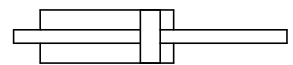
Zylinder ohne Dämpfung



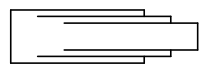
Zylinder mit Dämpfung



Gleichlaufzylinder



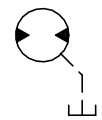
Teleskopzylinder



Hydromotor  
eine Drehrichtung



Hydromotor  
zwei Drehrichtungen



Schwenktrieb

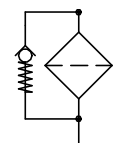


## Ausrüstungen

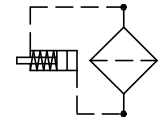
Belüfter



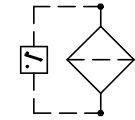
Rücklauffilter



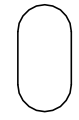
Druckfilter  
opt. Verschm.Anzeige



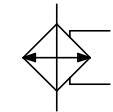
Druckfilter  
el. Verschm.Anzeige



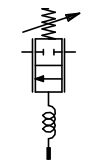
Speicher



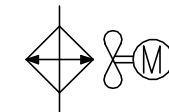
Wasser-Oel-Kühler



Therm. Wasserventil



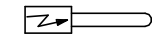
Oel-Luft-Kühler



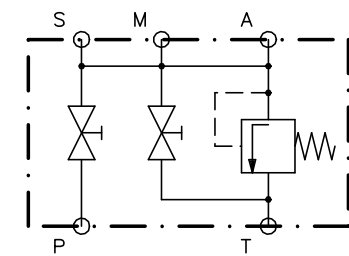
Ablasshahn



Stabheizung



Speicher-Sicherheitsblock



## Messinstrumente

Manometer



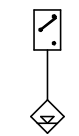
Minimess



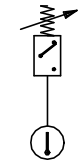
Druckschalter



Niveau-Messgerät



Thermostat



Durchflussmessgerät / Wächter



Druckmesswandler



## HYDRAULIK - SCHEMA

Kunde:  
Anlage:  
Kom.Nr.:

ABB Technikerschule      Dat.:      Gez.:

CH-5400 Baden      S      Symbole

Blatt: /

Das Urheberrecht an diesen Zeichnungen und allen Beilagen, die dem Empfänger persönlich anvertraut sind, verbleiben jederzeit unserer Firma. Ohne schriftliche Genehmigung dürfen sie weder kopiert oder vervielfältigt, noch dritten Personen mitgeteilt oder zugänglich gemacht werden.